

新製品



モールド型パワーインダクタ TZMSCA シリーズ

NEW



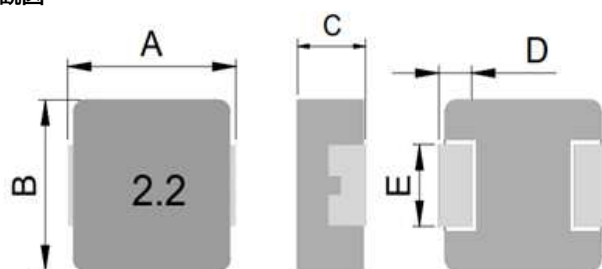
■特徴

- 合金材料を使用し、大電流と低直流抵抗を実現
- 閉磁路により漏れ磁束を低減
- 小型・低背の表面実装タイプ

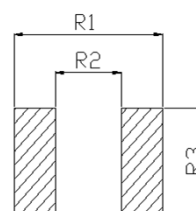
■用途

- 映像・無線機器のDC/DCコンバーターなど
- 各種DC/DCコンバーターなど

■外観図



■推奨ランドパターン



Part Number	Dimensions							
	A	B	C	D	E	R1	R2	R3
TZMS4020CA	4.45±0.25	4.10±0.20	1.80±0.20	0.80±0.25	1.50±0.20	5.2	2.2	2.5
TZMS5030CA	5.70±0.30	5.20±0.20	2.80±0.20	1.00±0.30	2.00±0.20	6.0	2.8	2.5
TZMS6030CA	7.10±0.30	6.60±0.20	2.80±0.20	1.60±0.30	3.00±0.20	8.0	3.7	3.4
TZMS6040CA			3.80±0.20			8.0	3.7	3.4
TZMS6050CA			4.80±0.20			8.0	3.5	3.4
TZMS10030CA	11.0±0.50	10.0±0.30	2.80±0.20	2.00±0.30	3.00±0.20	13.6	5.4	3.5
TZMS10040CA			3.80±0.20			12.5	5.4	3.5
TZMS10050CA			4.80±0.20			12.5	5.4	3.5
TZMS12050CA	13.5±0.50	12.6±0.20	4.70±0.30	2.30±0.30	4.70±0.30	14.5	8.0	5.0
TZMS12060CA			5.70±0.30			14.2	8.0	5.0
TZMS12065CA			6.20±0.30			14.2	8.0	5.0
TZMS17070CA	17.8±0.50	16.9±0.30	6.70±0.30	2.30±0.30	11.9±0.30	18.5	12.0	12.5

■電気的特性

●TZMS4020CA

Part Number	Inductance (μ H)	Inductance Tolerance (%)	DC Resistance (m Ω) MAX	Rated current	
				Saturation current (A) Max.	Temperature Rise Current (A) Max.
TZMS4020CA-R10	0.10	±20	3.2	22.0	14.0
TZMS4020CA-R22	0.22	±20	5.5	13.0	12.5
TZMS4020CA-R47	0.47	±20	11.0	8.0	9.0
TZMS4020CA-R68	0.68	±20	13.5	6.6	8.0
TZMS4020CA-R82	0.82	±20	18.8	5.5	7.0
TZMS4020CA-1R0	1.0	±20	22.0	5.0	6.5
TZMS4020CA-1R2	1.2	±20	25.0	4.9	6.2
TZMS4020CA-1R5	1.5	±20	31.0	4.8	5.8
TZMS4020CA-2R2	2.2	±20	48.0	4.0	5.0
TZMS4020CA-3R3	3.3	±20	75.0	2.7	3.5
TZMS4020CA-4R7	4.7	±20	95.0	2.5	3.2
TZMS4020CA-5R6	5.6	±20	115.0	2.3	2.8
TZMS4020CA-6R8	6.8	±20	157.0	2.1	2.5
TZMS4020CA-8R2	8.2	±20	168.0	2.0	2.3
TZMS4020CA-100	10	±20	215.0	1.9	2.2

●TZMS5030CA

Part Number	Inductance (μ H)	Inductance Tolerance (%)	DC Resistance (m Ω) MAX	Rated current	
				Saturation current (A) Max.	Temperature Rise Current (A) Max.
TZMS5030CA-R47	0.47	\pm 20	6.0	9.00	12.0
TZMS5030CA-R68	0.68	\pm 20	8.5	8.00	11.0
TZMS5030CA-R82	0.82	\pm 20	9.2	7.70	9.0
TZMS5030CA-1R0	1.0	\pm 20	12.0	7.50	8.0
TZMS5030CA-1R2	1.2	\pm 20	14.4	7.00	7.5
TZMS5030CA-1R5	1.5	\pm 20	15.7	6.50	7.0
TZMS5030CA-2R2	2.2	\pm 20	25.0	5.80	6.5
TZMS5030CA-2R7	2.7	\pm 20	30.0	5.50	6.2
TZMS5030CA-3R3	3.3	\pm 20	33.0	5.30	5.8
TZMS5030CA-4R7	4.7	\pm 20	44.0	4.60	4.8
TZMS5030CA-5R6	5.6	\pm 20	58.0	4.00	4.3
TZMS5030CA-6R8	6.8	\pm 20	66.0	3.10	3.7
TZMS5030CA-100	10	\pm 20	103	2.10	3.4

●TZMS6030CA

Part Number	Inductance (μ H)	Inductance Tolerance (%)	DC Resistance (m Ω) MAX	Rated current	
				Saturation current (A) Max.	Temperature Rise Current (A) Max.
TZMS6030CA-R15	0.15	\pm 30	2.1	36.0	25.0
TZMS6030CA-R22	0.22	\pm 20	2.5	32.0	21.0
TZMS6030CA-R24	0.24	\pm 20	2.7	24.0	20.5
TZMS6030CA-R33	0.33	\pm 20	3.4	22.0	20.0
TZMS6030CA-R36	0.36	\pm 20	3.9	21.0	18.0
TZMS6030CA-R47	0.47	\pm 20	4.0	18.0	16.0
TZMS6030CA-R56	0.56	\pm 20	4.5	16.0	15.0
TZMS6030CA-R68	0.68	\pm 20	5.3	15.0	14.5
TZMS6030CA-R82	0.82	\pm 20	6.0	14.0	13.0
TZMS6030CA-1R0	1.0	\pm 20	7.4	13.5	11.0
TZMS6030CA-1R2	1.2	\pm 20	9.5	12.5	9.5

●TZMS6030CA

Part Number	Inductance (μ H)	Inductance Tolerance (%)	DC Resistance (m Ω) MAX	Rated current	
				Saturation current (A) Max.	Temperature Rise Current (A) Max.
TZMS6030CA-1R5	1.50	\pm 20	12.1	12.0	9.0
TZMS6030CA-1R8	1.80	\pm 20	13.0	10.0	8.0
TZMS6030CA-2R2	2.2	\pm 20	15.0	9.0	7.5
TZMS6030CA-2R7	2.7	\pm 20	20.0	8.8	7.0
TZMS6030CA-3R3	3.3	\pm 20	22.0	8.5	6.0
TZMS6030CA-4R7	4.7	\pm 20	33.0	5.5	5.0
TZMS6030CA-5R6	5.6	\pm 20	42.0	5.2	5.0
TZMS6030CA-6R8	6.8	\pm 20	50.0	5.0	4.2
TZMS6030CA-8R2	8.2	\pm 20	60.0	4.7	4.0
TZMS6030CA-100	10.0	\pm 20	68.0	4.5	3.5
TZMS6030CA-120	12.0	\pm 20	78.0	4.1	3.0
TZMS6030CA-150	15.0	\pm 20	140	4.0	2.5
TZMS6030CA-180	18.0	\pm 20	160	3.0	2.3
TZMS6030CA-220	22.0	\pm 20	190	2.5	2.0

●TZMS6040CA

Part Number	Inductance (μ H)	Inductance Tolerance (%)	DC Resistance (m Ω) MAX	Rated current	
				Saturation current (A) Max.	Temperature Rise Current (A) Max.
TZMS6040CA-R33	0.33	\pm 20	2.50	25.0	23.0
TZMS6040CA-R45	0.45	\pm 20	3.20	18.0	18.0
TZMS6040CA-R56	0.56	\pm 20	3.70	17.0	16.0
TZMS6040CA-1R0	1.00	\pm 20	6.20	13.5	13.0
TZMS6040CA-6R8	6.80	\pm 20	38.0	5.8	6.5

●TZMS6050CA

Part Number	Inductance (μ H)	Inductance Tolerance (%)	DC Resistance (m Ω) MAX	Rated current	
				Saturation current (A) Max.	Temperature Rise Current (A) Max.
TZMS6050CA-R15	0.15	\pm 20	1.70	40.0	32.0
TZMS6050CA-R47	0.47	\pm 20	3.30	20.0	20.0
TZMS6050CA-R56	0.56	\pm 20	3.90	18.0	19.0
TZMS6050CA-R68	0.68	\pm 20	4.10	17.0	18.0
TZMS6050CA-R82	0.82	\pm 20	5.90	15.0	16.0
TZMS6050CA-1R0	1.00	\pm 20	6.20	13.0	15.0
TZMS6050CA-1R2	1.20	\pm 20	7.10	11.0	14.0
TZMS6050CA-1R5	1.50	\pm 20	7.30	10.5	13.0
TZMS6050CA-1R8	1.80	\pm 20	9.0	9.0	12.5
TZMS6050CA-2R2	2.20	\pm 20	11.5	8.5	12.0
TZMS6050CA-3R3	3.30	\pm 20	16.2	8.0	11.0
TZMS6050CA-4R7	4.70	\pm 20	24.0	7.5	9.5
TZMS6050CA-5R6	5.60	\pm 20	33.0	7.2	8.5
TZMS6050CA-6R8	6.80	\pm 20	36.0	7.0	8.0
TZMS6050CA-8R2	8.20	\pm 20	45.0	6.0	6.5
TZMS6050CA-100	10.0	\pm 20	53.0	5.7	6.0
TZMS6050CA-120	12.0	\pm 20	68.0	4.7	4.8
TZMS6050CA-150	15.0	\pm 20	85.0	3.2	4.0
TZMS6050CA-220	22.0	\pm 20	142.0	3.1	3.6
TZMS6050CA-330	33.0	\pm 20	170.0	1.8	2.5
TZMS6050CA-470	47.0	\pm 20	320.0	1.5	2.0

●TZMS10030CA

Part Number	Inductance (μ H)	Inductance Tolerance (%)	DC Resistance (m Ω) MAX	Rated current	
				Saturation current (A) Max.	Temperature Rise Current (A) Max.
TZMS10030CA-R22	0.22	\pm 20	1.00	45.0	30.0
TZMS10030CA-R36	0.36	\pm 20	1.40	35.0	25.0
TZMS10030CA-R47	0.47	\pm 20	2.20	32.0	23.0
TZMS10030CA-R82	0.82	\pm 20	3.70	25.0	18.0
TZMS10030CA-2R2	2.2	\pm 20	8.80	16.0	12.0
TZMS10030CA-8R2	8.2	\pm 20	38.0	6.8	6.5

●TZMS10040CA

Part Number	Inductance (μ H)	Inductance Tolerance (%)	DC Resistance (m Ω) MAX	Rated current	
				Saturation current (A) Max.	Temperature Rise Current (A) Max.
TZMS10040CA-R15	0.15	\pm 30	0.60	75.0	38.0
TZMS10040CA-R18	0.18	\pm 20	0.63	68.0	36.0
TZMS10040CA-R22	0.22	\pm 20	0.83	60.0	33.0
TZMS10040CA-R33	0.33	\pm 20	0.98	49.0	31.0
TZMS10040CA-R36	0.36	\pm 20	1.18	45.0	29.0
TZMS10040CA-R42	0.42	\pm 20	1.30	42.0	28.5
TZMS10040CA-R45	0.45	\pm 20	1.40	42.0	28.5
TZMS10040CA-R47	0.47	\pm 20	1.50	40.0	28.0
TZMS10040CA-R56	0.56	\pm 20	1.80	29.0	23.0
TZMS10040CA-R68	0.68	\pm 20	2.20	28.0	20.0
TZMS10040CA-R82	0.82	\pm 20	2.50	27.0	19.0
TZMS10040CA-R88	0.88	\pm 20	2.60	27.0	19.0
TZMS10040CA-R90	0.90	\pm 20	2.60	27.0	19.0
TZMS10040CA-1R0	1.0	\pm 20	3.25	26.0	18.0
TZMS10040CA-1R2	1.2	\pm 20	3.80	24.0	17.0
TZMS10040CA-1R5	1.5	\pm 20	4.20	22.0	16.0
TZMS10040CA-1R8	1.8	\pm 20	5.70	20.5	15.0
TZMS10040CA-2R0	2.0	\pm 20	6.10	18.0	14.5
TZMS10040CA-2R2	2.2	\pm 20	6.70	16.0	13.0
TZMS10040CA-3R3	3.3	\pm 20	11.80	14.0	10.0
TZMS10040CA-4R7	4.7	\pm 20	19.00	13.0	8.0
TZMS10040CA-5R6	5.6	\pm 20	22.80	11.5	7.2
TZMS10040CA-6R8	6.8	\pm 20	24.50	11.0	6.8
TZMS10040CA-8R2	8.2	\pm 20	28.00	8.5	6.5
TZMS10040CA-100	10	\pm 20	30.00	7.5	6.1
TZMS10040CA-150	15	\pm 20	45.00	6.0	5.0
TZMS10040CA-220	22	\pm 20	66.00	5.5	4.1

●TZMS10050CA

Part Number	Inductance (μ H)	Inductance Tolerance (%)	DC Resistance (m Ω) MAX	Rated current	
				Saturation current (A) Max.	Temperature Rise Current (A) Max.
TZMS10050CA-R30	0.30	\pm 20	0.80	49.0	32.0
TZMS10050CA-R36	0.36	\pm 20	0.92	46.0	30.0
TZMS10050CA-R47	0.47	\pm 20	1.32	40.0	29.0
TZMS10050CA-R68	0.68	\pm 20	1.90	32.0	25.0
TZMS10050CA-1R0	1.0	\pm 20	3.00	30.0	23.0
TZMS10050CA-1R5	1.5	\pm 20	3.80	24.0	21.0
TZMS10050CA-2R2	2.2	\pm 20	5.60	18.0	17.5

●TZMS10050CA

Part Number	Inductance (μ H)	Inductance Tolerance (%)	DC Resistance (m Ω) MAX	Rated current	
				Saturation current (A) Max.	Temperature Rise Current (A) Max.
TZMS10050CA-3R3	3.3	\pm 20	9.1	15.5	15.0
TZMS10050CA-4R7	4.7	\pm 20	10.5	14.0	13.0
TZMS10050CA-5R6	5.6	\pm 20	14.4	12.5	11.0
TZMS10050CA-6R8	6.8	\pm 20	17.3	12.0	10.0
TZMS10050CA-8R2	8.2	\pm 20	18.8	11.5	8.5
TZMS10050CA-100	10.0	\pm 20	21.8	11.0	7.2
TZMS10050CA-150	15.0	\pm 20	39.0	7.5	6.0
TZMS10050CA-220	22.0	\pm 20	54.0	5.5	5.5
TZMS10050CA-330	33.0	\pm 20	86.0	5.2	5.0
TZMS10050CA-470	47.0	\pm 20	127	4.0	4.0
TZMS10050CA-101	100	\pm 20	290	2.4	2.0

●TZMS12050CA

Part Number	Inductance (μ H)	Inductance Tolerance (%)	DC Resistance (m Ω) MAX	Rated current	
				Saturation current (A) Max.	Temperature Rise Current (A) Max.
TZMS12050CA-R22	0.22	\pm 20	0.80	49.0	32.0
TZMS12050CA-R47	0.47	\pm 20	0.92	46.0	30.0
TZMS12050CA-R56	0.56	\pm 20	1.32	40.0	29.0
TZMS12050CA-R68	0.68	\pm 20	1.90	32.0	25.0
TZMS12050CA-R82	0.82	\pm 20	3.00	30.0	23.0
TZMS12050CA-1R0	1.0	\pm 20	3.80	24.0	21.0
TZMS12050CA-1R2	1.2	\pm 20	5.60	18.0	17.5
TZMS12050CA-1R5	1.5	\pm 20	9.10	15.5	15.0
TZMS12050CA-1R8	1.8	\pm 20	10.5	14.0	13.0
TZMS12050CA-2R2	2.2	\pm 20	14.4	12.5	11.0
TZMS12050CA-3R3	3.3	\pm 20	17.3	12.0	10.0
TZMS12050CA-4R7	4.7	\pm 20	18.8	11.5	8.5
TZMS12050CA-5R6	5.6	\pm 20	21.8	11.0	7.2
TZMS12050CA-6R8	6.8	\pm 20	39.0	7.5	6.0
TZMS12050CA-8R2	8.2	\pm 20	86.0	5.2	5.0
TZMS12050CA-100	10	\pm 20	54.0	5.5	5.5
TZMS12050CA-150	15	\pm 20	127	4.0	4.0
TZMS12050CA-220	22	\pm 20	290	2.4	2.0
TZMS12050CA-330	33	\pm 20	80.0	6.5	5.2
TZMS12050CA-390	39	\pm 20	84.0	5.8	4.8
TZMS12050CA-470	47	\pm 20	94.0	5.2	4.3
TZMS12050CA-680	68	\pm 20	132	4.4	3.6
TZMS12050CA-101	100	\pm 20	210	3.7	3.0
TZMS12050CA-121	120	\pm 20	270	3.2	2.5
TZMS12050CA-151	150	\pm 20	336	2.8	2.3

●TZMS12060CA

Part Number	Inductance (μ H)	Inductance Tolerance (%)	DC Resistance (m Ω) MAX	Rated current	
				Saturation current (A) Max.	Temperature Rise Current (A) Max.
TZMS12060CA-R36	0.36	\pm 20	0.80	60.0	50.0
TZMS12060CA-R82	0.82	\pm 20	1.7	36.0	30.0
TZMS12060CA-1R0	1.0	\pm 20	2.0	29.0	26.0
TZMS12060CA-1R5	1.5	\pm 20	3.0	27.0	24.0

●TZMS12060CA

Part Number	Inductance (μ H)	Inductance Tolerance (%)	DC Resistance (m Ω) MAX	Rated current	
				Saturation current (A) Max.	Temperature Rise Current (A) Max.
TZMS12060CA-2R2	2.2	\pm 20	4.3	24.0	21.0
TZMS12060CA-3R3	3.3	\pm 20	6.5	24.0	18.0
TZMS12060CA-4R7	4.7	\pm 20	8.4	19.5	16.0
TZMS12060CA-5R6	5.6	\pm 20	10.8	17.0	14.0
TZMS12060CA-8R2	8.2	\pm 20	16.0	15.5	12.0
TZMS12060CA-100	10	\pm 20	18.6	14.5	10.5
TZMS12060CA-150	15	\pm 20	29.0	9.0	8.5
TZMS12060CA-220	22	\pm 20	37.5	8.0	7.0
TZMS12060CA-330	33	\pm 20	68.0	6.7	5.5
TZMS12060CA-470	47	\pm 20	88.0	5.5	4.5
TZMS12060CA-560	56	\pm 20	108	5.3	4.1
TZMS12060CA-680	68	\pm 20	124	5.0	3.7
TZMS12060CA-101	100	\pm 20	195	4.0	2.8
TZMS12060CA-151	150	\pm 20	325	3.2	2.2

●TZMS12060CA

Part Number	Inductance (μ H)	Inductance Tolerance (%)	DC Resistance (m Ω) MAX	Rated current	
				Saturation current (A) Max.	Temperature Rise Current (A) Max.
TZMS12065-R22	0.22	\pm 20	0.46	105.0	42.0
TZMS12065-R33	0.33	\pm 20	0.70	65.0	36.0
TZMS12065-R47	0.47	\pm 20	1.02	58.0	35.0
TZMS12065-R50	0.50	\pm 20	1.10	55.0	34.0
TZMS12065-R56	0.56	\pm 20	1.30	50.0	33.5
TZMS12065-R68	0.68	\pm 20	1.50	46.0	33.0
TZMS12065-R82	0.82	\pm 20	1.65	39.0	31.0
TZMS12065-1R0	1.0	\pm 20	1.80	36.0	29.0
TZMS12065-1R2	1.2	\pm 20	2.20	33.0	27.0
TZMS12065-1R5	1.5	\pm 20	2.53	30.0	25.0
TZMS12065-1R8	1.8	\pm 20	3.60	27.0	23.0
TZMS12065-2R2	2.2	\pm 20	4.20	24.0	21.0
TZMS12065-2R4	2.4	\pm 20	4.50	23.5	20.5
TZMS12065-2R7	2.7	\pm 20	5.00	23.0	20.0
TZMS12065-3R3	3.3	\pm 20	6.20	22.5	19.0
TZMS12065-4R7	4.7	\pm 20	8.00	21.0	17.0
TZMS12065-5R6	5.6	\pm 20	9.80	19.5	15.0
TZMS12065-6R0	6.0	\pm 20	10.4	19.0	14.5
TZMS12065-6R8	6.8	\pm 20	11.3	18.0	14.0
TZMS12065-8R2	8.2	\pm 20	13.8	17.0	12.5
TZMS12065-100	10	\pm 20	15.8	15.0	11.0
TZMS12065-150	15	\pm 20	26.0	12.0	9.5
TZMS12065-220	22	\pm 20	35.0	9.0	8.0
TZMS12065-270	27	\pm 20	45.0	8.0	7.2
TZMS12065-330	33	\pm 20	55.0	8.0	6.5
TZMS12065-470	47	\pm 20	67.0	6.8	5.7
TZMS12065-680	68	\pm 20	100	5.0	4.8
TZMS12065-820	82	\pm 20	132	4.2	4.0
TZMS12065-101	100	\pm 20	161	4.0	3.8

●TZMS17070CA

Part Number	Inductance (μ H)	Inductance Tolerance (%)	DC Resistance (m Ω) MAX	Rated current	
				Saturation current (A) Max.	Temperature Rise Current (A) Max.
TZMS17070CA-R47	0.47	\pm 20	0.90	100.0	55.0
TZMS17070CA-R56	0.56	\pm 20	0.97	70.0	50.0
TZMS17070CA-1R0	1.0	\pm 20	1.30	45.0	42.0
TZMS17070CA-1R5	1.5	\pm 20	1.80	40.0	35.0
TZMS17070CA-1R8	1.8	\pm 20	2.00	34.0	32.0
TZMS17070CA-2R0	2.0	\pm 20	2.10	33.0	31.0
TZMS17070CA-2R2	2.2	\pm 20	2.20	32.0	30.0
TZMS17070CA-3R3	3.3	\pm 20	3.30	29.0	28.0
TZMS17070CA-4R0	4.0	\pm 20	4.30	27.0	27.0
TZMS17070CA-4R7	4.7	\pm 20	4.50	26.0	26.0
TZMS17070CA-5R6	5.6	\pm 20	6.00	23.0	23.0
TZMS17070CA-6R8	6.8	\pm 20	7.20	22.0	22.0
TZMS17070CA-100	10	\pm 20	10.6	19.0	19.0
TZMS17070CA-150	15	\pm 20	15.5	14.0	14.0
TZMS17070CA-180	18	\pm 20	20.0	12.0	12.5
TZMS17070CA-220	22	\pm 20	24.0	11.5	11.5
TZMS17070CA-330	33	\pm 20	37.0	10.0	10.0
TZMS17070CA-470	47	\pm 20	47.0	8.0	8.0
TZMS17070CA-680	68	\pm 20	76.0	7.2	6.5
TZMS17070CA-820	82	\pm 20	83.0	6.5	5.7
TZMS17070CA-101	100	\pm 20	105	5.5	5.0

■Conditions/測定条件

- (1)When the rated current is energized, the temperature rises below 40°C, and the inductance value decreases to within 30%.
定格電流通電時、温度上昇40°C以下、インダクタンス値低下30%以内です。
- (2)Operating temperature :-55°C~125°C (Including temperature rise)
動作温度 :-55°C~125°C(温度上昇を含む)
- (3)The measuring frequency and surroundings temperature are 100KHz/1.0V and 23°C, respectively.
測定周波数 :100KHz/1.0V、測定周囲温度:23°C。